

Strata Guard Lite v5.0

Virtual Appliance Image Tech Note – March 9, 2009

Overview

This tech note provides installation and configuration procedures for the virtual appliance version of Strata Guard Lite. Once the virtual appliance is installed and running, using the procedures presented below, please refer to the Strata Guard Users' Guide for all other configuration and usage information.

Installation procedure

- 1 Download and install VMware® Player from www.vmware.com.



NOTE

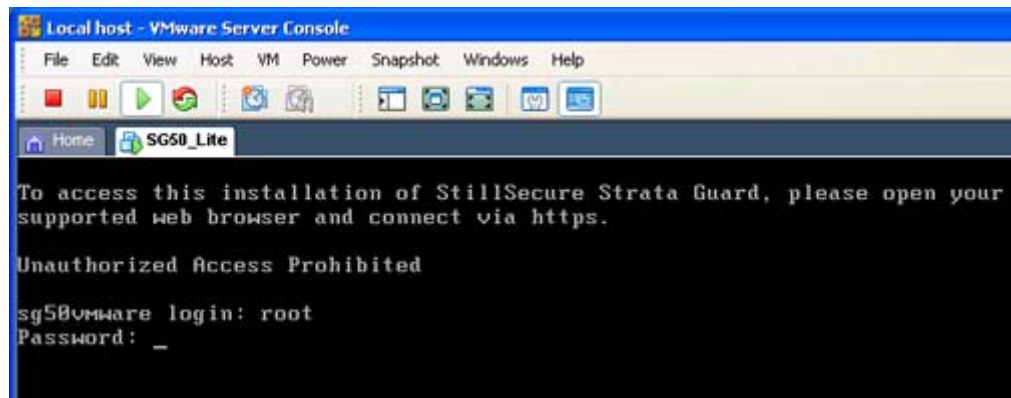
If VMware Player asks you if you want to generate new keys for this VMware instance, you must choose to keep the current keys. Otherwise, your network adapters will be misconfigured when running VMware.

- 2 Download the Strata Guard Lite VMware player image from www.stillsecure.com/strataguard/sglite.
- 3 Create a new directory (for example, 'Strata Guard virtual appliance') and extract the Strata Guard Lite VMware player to it.
- 4 Start the VMware player.
- 5 In the VMware player, navigate to the directory containing the extracted Strata Guard Lite VMware image.
- 6 Select the **VMwarePlayer.vmx** virtual appliance configuration file.
- 7 Press the appliance's power button. The Strata Guard Lite virtual appliance will boot.
- 8 Log into the virtual appliance, using the following credentials as shown in [Figure 1](#):

Login: root

Password: sgvmware

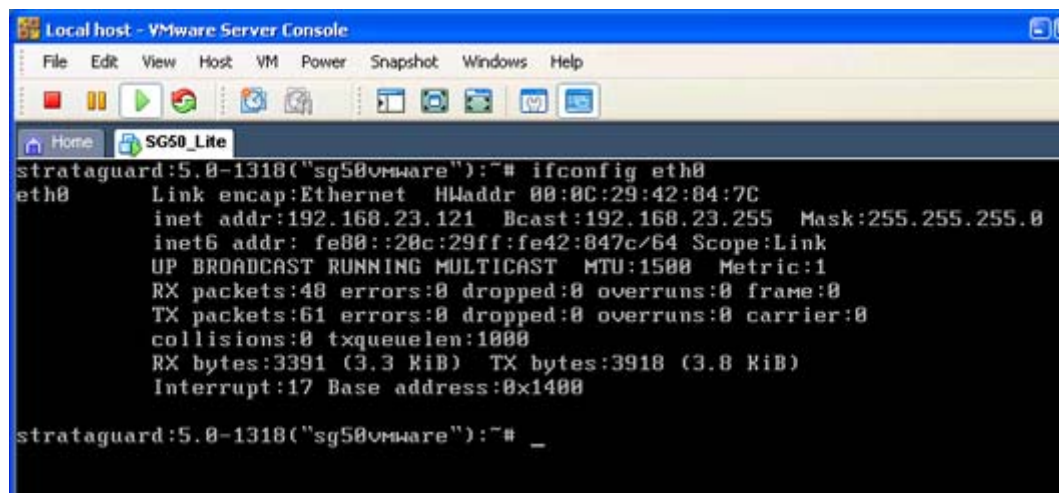
Figure 1: The VMware login screen.



- 9 On the virtual appliance command line, run the `ifconfig` command to verify the IP address of the virtual appliance as shown in Figure 2:

```
ifconfig eth0
```

Figure 2: An example of running the `ifconfig` command on the VMware appliance.



- 10 Update the IP address of the virtual appliance using the following command as shown in Figure 3:

```
setupnetwork -ip <ip_address> -nm <network_mask> -gw <gateway> -ns
<name_server>
```

<ip_address> is the primary IP address assigned to this server.

<network_mask> is the network mask for this server's network.

<gateway> is the IP address of your default gateway.

<name_server> is the IP address of your DNS server.

Example:

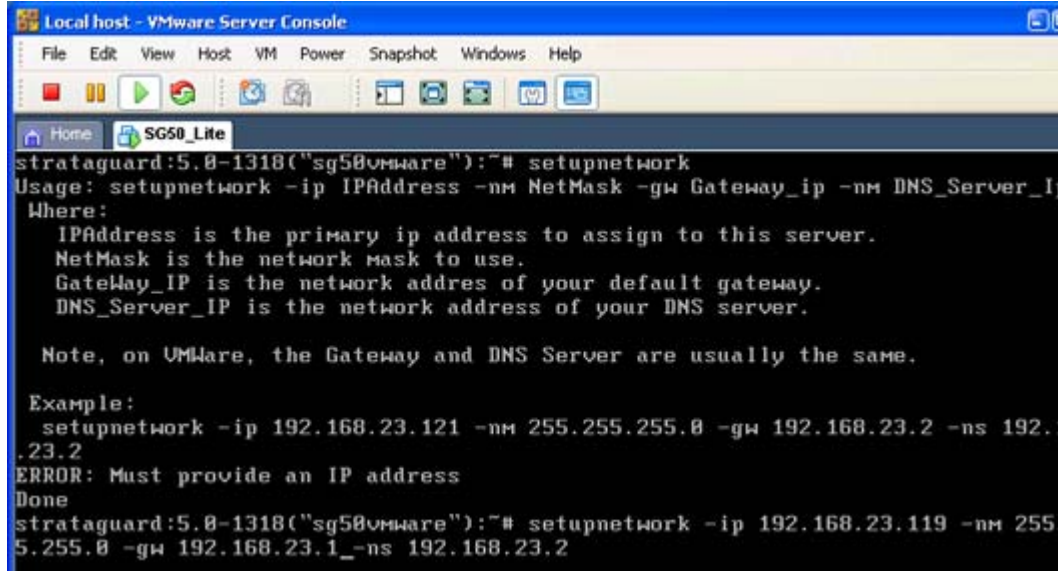
```
setupnetwork -ip 192.168.23.121 -nm 255.255.255.0 -gw 192.168.23.1 -ns
```

192.168.23.2

NOTE

On most VMware installations, the IP address of the gateway and DNS Server are the same.

Figure 3: An example of running the `setupnetwork` command on the VMware appliance.



```
Local host - VMware Server Console
File Edit View Host VM Power Snapshot Windows Help
Home SG50_Lite
strataguard:5.0-1318("sg50vmware"):~# setupnetwork
Usage: setupnetwork -ip IPAddress -nm NetMask -gw Gateway_ip -nm DNS_Server_IP
Where:
  IPAddress is the primary ip address to assign to this server.
  NetMask is the network mask to use.
  GateWay_IP is the network address of your default gateway.
  DNS_Server_IP is the network address of your DNS server.

Note, on VMWare, the Gateway and DNS Server are usually the same.

Example:
  setupnetwork -ip 192.168.23.121 -nm 255.255.255.0 -gw 192.168.23.2 -ns 192.
.23.2
ERROR: Must provide an IP address
Done
strataguard:5.0-1318("sg50vmware"):~# setupnetwork -ip 192.168.23.119 -nm 255
5.255.0 -gw 192.168.23.1 -ns 192.168.23.2
```

11 Test the connection to the virtual appliance using the following command:

```
ssh <ip_address>
```

<ip_address> is the primary IP address assigned to this server.

Example:

```
ssh 192.168.23.121
```

Launch Strata Guard Lite

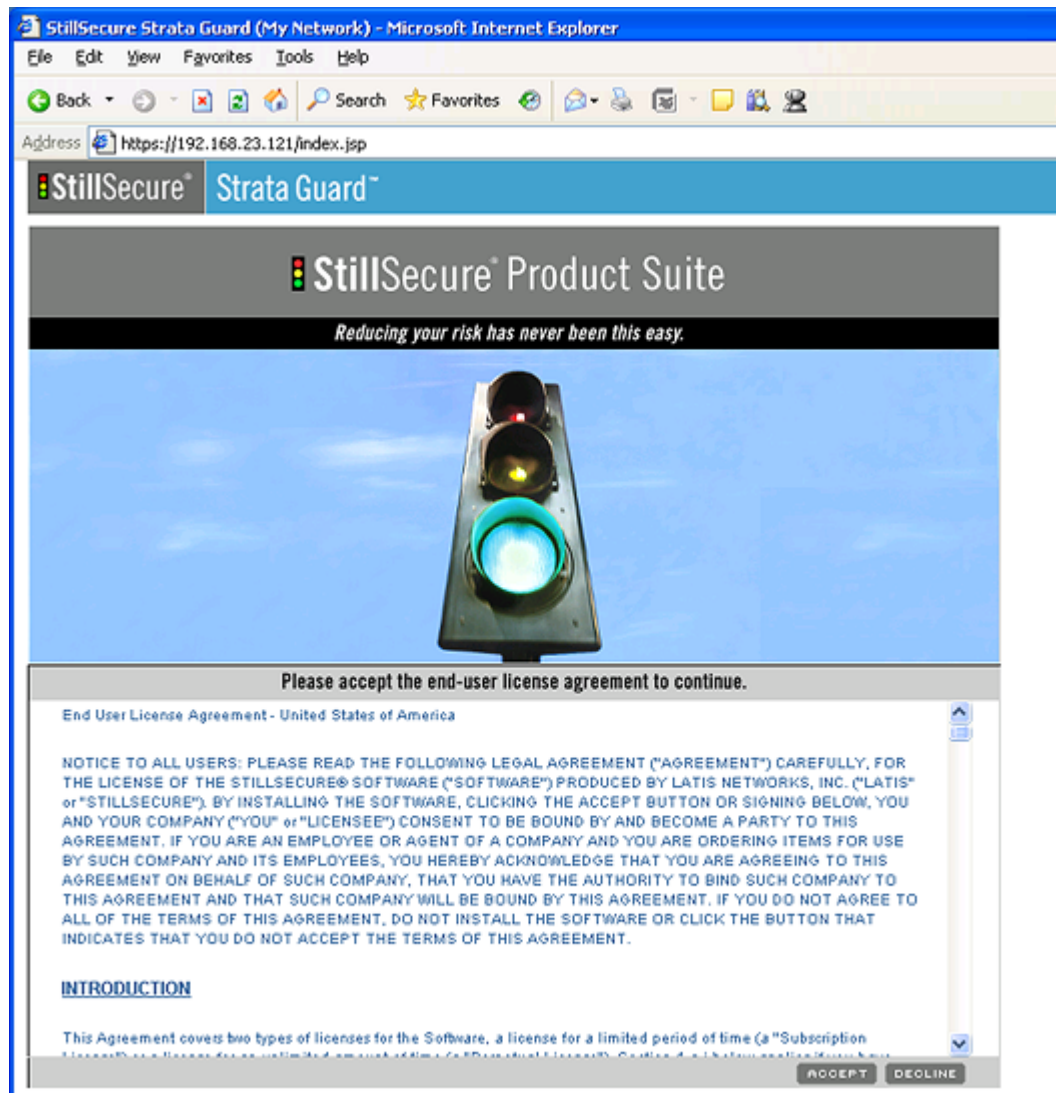
To launch Strata Guard Lite, do the following:

- 1 Open an Internet Explorer® Web browser (v6.0 or higher) and enter the static IP address of the Strata Guard Lite virtual appliance. Be sure to use https format:

```
https://<ip_address>
```

- 2 When the product license agreement is shown (Figure 4), click **Accept**.

Figure 4: The Strata Guard Lite license agreement window.



- 3 On the account creation window (Figure 5), enter a user name and password for the Strata Guard Lite virtual appliance.

Figure 5: The Strata Guard Lite user account creation window.

StillSecure Strata Guard (My Network) - Microsoft Internet Explorer

File Edit View Favorites Tools Help

Back Forward Stop Home Search Favorites

Address <https://192.168.23.121/index.jsp>

StillSecure® Strata Guard™

StillSecure® Strata Guard™

Protects you from the cost of malicious attacks.

To complete the installation:

Create a new user ID for the Strata Guard console.

Create User ID:

User ID:

Password:

Re-enter password:

CONTINUE

- 4 Click **Continue**. The Strata Guard configuration tabs display (Figure 6).

Figure 6: Strata Guard Lite configuration tabs, with the General tab selected.

- 5 On the **General** tab, enter the license key that was emailed to you when you registered for the product on www.stillsecure.com.
- 6 Click **Validate**.

This completes the installation of the Strata Guard Lite virtual appliance. For configuring the Strata Guard Lite application see the Strata Guard Users' Guide.

Promiscuous operation

The Strata Guard Lite virtual appliance must run in promiscuous mode, which allows it to see traffic coming to and from the host machine. Following the installation instructions above should automatically deploy Strata Guard Lite in a promiscuous configuration. Should you require additional information, VMware has published the following document on running appliances in promiscuous mode:

http://www.vmware.com/support/ws55/doc/ws_net_advanced_linux_vadapter_promiscuous.html