

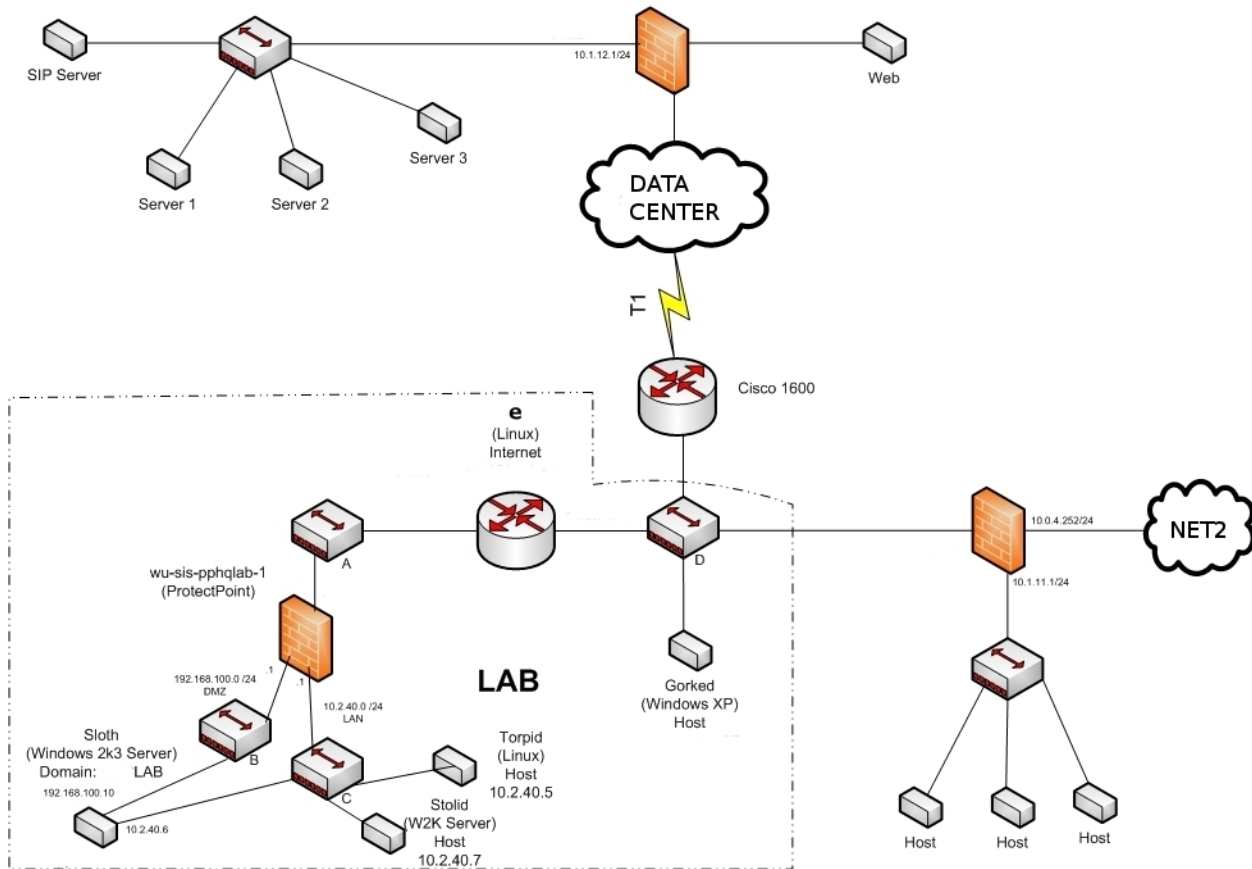
## PCI Requirement 1 Audit Report

Report description:	For the specified timeframe, this report shows your organization's Payment Card Industry (PCI) compliance status with respect to PCI requirement 1
Requirement 1 name:	Firewall management
Requirement 1 brief:	Install and maintain a firewall configuration to protect cardholder data
Organization:	SunnyCo 100 Main Street Boston,MA 45218
Timeframe:	September 08, 2010 - September 09, 2010

## CDE Network Diagram

This section shows the Cardholder Data Environment (CDE) network diagram for this organization.

Proprietary and Confidential



## CDE Devices

This section lists all devices in the Cardholder Data Environment (CDE), including each device's primary function, hostname, IP address, and authorized users.

Primary Function	Name	IP Address	Authorized Users
firewall	jeff2	127.0.0.1	root socanalyst
authentication	pp-jeff-3	192.168.34.253	root socanalyst

webserver	pp-jeff-2	192.168.34.191	root socanalyst
vm server	vm	192.168.34.156	jsundquist root
database	hostdb	172.100.0.5	dbuser
webserver	hostweb	172.100.0.46	webuser

## Authorized Firewall Administrators

This section lists all personnel who are authorized to make changes to this organization's firewalls. StillSecure SOC analysts are also authorized to make firewall changes to the Cardholder Data Environment. Please inquire with StillSecure for more information.

Full Name	Title	Company	E-mail
Van Johnson	Chief Scientist	SeverLANd Inc.	vj@sl.org.com
Alexander Scott	Senior Analyst	International Products	ascott@ip.com.net
Emma Knight Peel	Chief Counsel	Peel, Steed and Assoc., LLC	peel@mi5.org.net

## Firewall Rules

### Legend

Port used for secure communication

Default rule

## Firewall Rules

This section lists all firewall rules governing the flow of information into and out of the Cardholder Data Environment (CDE).

No	Id	Chain	Target	Proto	Source Interface	Source	Destination Interface	Destination
1	6034336	<b>FORWARD ACCEPT</b>	all	all	(any)		(tun+)	
2	6034341	<b>FORWARD ACCEPT</b>	all	all	(tun+)		(any)	
3	6034351	<b>FORWARD ACCEPT</b>	all	all	(any)		(any)	
4	6034356	<b>FORWARD ACCEPT</b>	all	all	(any)		(External)	

5	6034376	<b>FORWARD</b>	<b>ACCEPT</b>	icmp	(any)		(any)
6	6034246	<b>FORWARD</b>	<b>DROP</b>	all	(any)	219.237.0.151	(any)
7	6034346	<b>FORWARD</b>	<b>DROP</b>	all	(any)		(any)
8	6034391	<b>FORWARD</b>	<b>LOG</b>	all	(any)		(any)
9	6034231	<b>INPUT</b>	<b>ACCEPT</b>	udp	(any)		(any) Port 514
10	6034236	<b>INPUT</b>	<b>ACCEPT</b>	all	(any)	10.254.4.0/24	(any)
11	6034241	<b>INPUT</b>	<b>ACCEPT</b>	all	(any)	10.254.3.0/24	(any)
12	6034251	<b>INPUT</b>	<b>ACCEPT</b>	all	(any)	10.125.0.1	(any)
13	6034256	<b>INPUT</b>	<b>ACCEPT</b>	all	(tun+)	10.125.0.1	(any)
14	6034286	<b>INPUT</b>	<b>ACCEPT</b>	all	(any)	216.183.121.172	(any)
15	6034291	<b>INPUT</b>	<b>ACCEPT</b>	all	(any)	216.183.121.216/29	(any)
16	6034296	<b>INPUT</b>	<b>ACCEPT</b>	all	(any)	216.183.121.168/32	(any)
17	6034301	<b>INPUT</b>	<b>ACCEPT</b>	all	(any)	10.9.14.0/24	(any)
18	6034306	<b>INPUT</b>	<b>ACCEPT</b>	all	(any)	10.9.12.0/24	(any)
19	6034311	<b>INPUT</b>	<b>ACCEPT</b>	50	(any)		(any)
20	6034316	<b>INPUT</b>	<b>ACCEPT</b>	all	(tun+)	10.124.0.1	(any)
21	6034321	<b>INPUT</b>	<b>ACCEPT</b>	icmp	(tun+)		(any)
22	6034326	<b>INPUT</b>	<b>ACCEPT</b>	tcp	(tun+)		(any) Port 80
23	6034331	<b>INPUT</b>	<b>ACCEPT</b>	tcp	(any)		(any) Port 443
24	6034361	<b>INPUT</b>	<b>ACCEPT</b>	udp	(any)		(any) Port 500
25	6034366	<b>INPUT</b>	<b>ACCEPT</b>	udp	(any)		(any) Port 4500
26	6034371	<b>INPUT</b>	<b>ACCEPT</b>	icmp	(any)		(any)
27	6034381	<b>INPUT</b>	<b>ACCEPT</b>	all	(any)		(any)
28	6034386	<b>INPUT</b>	<b>ACCEPT</b>	icmp	(Internal)		(any)
29	6034401	<b>INPUT</b>	<b>ACCEPT</b>	tcp	(any)	192.168.34.0/24	(any) Port 22
30	6037701	<b>INPUT</b>	<b>ACCEPT</b>	udp	(any)		(any) Port 1514
31	6034396	<b>INPUT</b>	<b>LOG</b>	all	(any)		(any)
32	6034261	<b>OUTPUT</b>	<b>ACCEPT</b>	tcp	(any)		(any) Port 53
33	6034266	<b>OUTPUT</b>	<b>ACCEPT</b>	udp	(any)		(any) Port 53
34	6034271	<b>OUTPUT</b>	<b>ACCEPT</b>	all	(any)		(any) 10.9.14.0/24
35	6034276	<b>OUTPUT</b>	<b>ACCEPT</b>	all	(any)		(any) 216.183.121.172/32

36	6034281	OUTPUT	ACCEPT	all	(any)	(any)	10.9.12.0/24
----	---------	--------	--------	-----	-------	-------	--------------

## Firewall Configuration Changes

This section lists all firewall rules which changed during the specified timeframe.

Total firewall rules changed: 1

Id	Date	User	Action	Old Value	New Value	Support Ticket
6034281	2010-09-08 14:17:22	rgoldberg	Add		Rule: -d 10.9.12.0/24 chain: OUTPUT target: ACCEPT	275

## Bi-annual Firewall Configuration Change Review

This section shows the support tickets related to the bi-annual firewall rules and configuration review.

### Change Process

A review of the customer configuration takes place every 6 months via the following process:

1. A support ticket is opened and categorized as a "6 month PCI configuration review" ticket.
2. The customer is sent the existing CDE diagram, CDE connection list, and firewall rules configuration with instructions to review each document for accuracy. This email is documented in the support ticket.
3. The customer reviews the documents and, if there are updates, either sends StillSecure updated documents or requests updates to the information. The updates are saved in the StillSecure ProtectPoint system.
4. The customer indicates in the support ticket that they sign-off on the accuracy of the documents and the support ticket is closed.
5. If the customer does not respond to the 6 month PCI configuration review support ticket request within 1 week, a reminder is sent.
6. If the customer does not respond to the 6 month PCI configuration review support ticket request within 2 weeks, another reminder is sent.
7. If the customer does not respond to the 6 month PCI configuration review support ticket request within 3 weeks, the support ticket is suspended and the lack of customer responsiveness is recorded in the ticket.

Support Ticket	Date
<i>No review found during this timeframe.</i>	